

**NEW**

# H 7100

Advanced Hematology Analyzer

**Deeper Insights,  
Better Care**



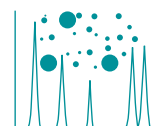
Insights for  
Eosinophilic Leukemia with IME



Early Intervention with  
LMR, PLR, NLR



Immature Cell Insights  
with Retics, IG and IPF



Fluorescence Flowcytometry  
Technology with 70+ Parameters

## Redefining Hematology Analysis

This cutting-edge diagnostic instrument sets a new benchmark in blood analysis, addressing the complex demands of clinical laboratories and research facilities.

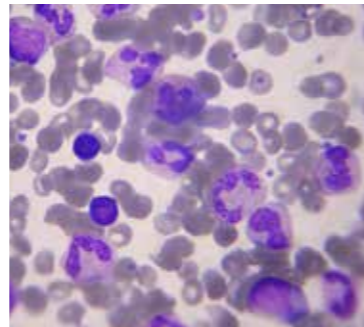
Equipped with an extensive parameter range, including the Reticulocyte panel (Retics), Immature Platelet Fraction (IPF) and Immature Granulocytes (IG), it empowers healthcare professionals to perform detailed and precise evaluations of various hematological conditions. The comprehensive data outputs not only enhance diagnostic accuracy but also provide valuable insights for research, facilitating in-depth analysis and interpretation.

### Gain Deeper Insights in Hematology Diagnostics with H 7100

- Unlock deeper insights into infections, inflammation and malignancies with unique parameters like **LMR, PLR, NLR and IME**
- Assess a wide spectrum of hematological conditions with **70+ advanced parameters**, including **Retics, IPF, IG and PLT-O**
- Achieve unmatched accuracy with **cutting-edge fluorescence flow cytometry**
- Detect abnormalities with **advanced flagging system**, ensuring dependable results every time

### Detection of Key Inflammatory Markers<sup>1-4</sup>

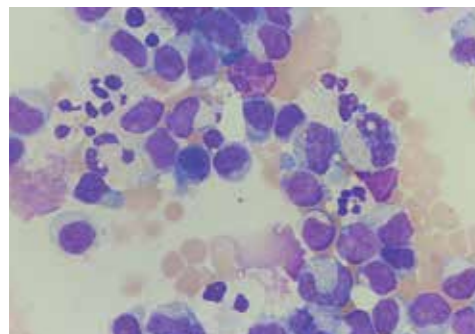
- **Neutrophil to Lymphocyte Ratio (NLR):** Predicts cancer and cardiovascular disease outcomes
- **Platelet to Lymphocyte Ratio (PLR):** Gauges the severity of systemic inflammation
- **Lymphocyte to Monocyte Ratio (LMR):** Assists in cancer prognosis and inflammatory disorders
- **Immature Granulocytes (IG):** Enable early detection of sepsis or severe inflammation
- **Immature Eosinophils (IME):** Indicate malignancy-linked inflammatory or allergic responses with eosinophilic activity



### Improved Diagnosis with Immature Cell Analysis<sup>3,4</sup>

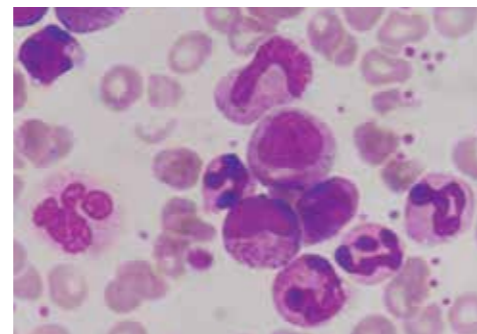
#### Immature Granulocytes (IG)

- Detect and monitors malignancies with precision
- Quantify abnormal granulocyte production
- Highlight abnormal bone marrow activity and systemic inflammation



#### Immature Eosinophils (IME)

- Indicate bone marrow stress or cancer cell infiltration
- Reflect immune response to tumor growth



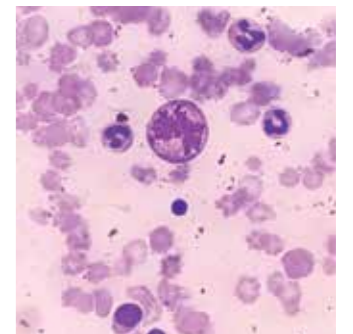
### Precise Detection of Platelet Disorders<sup>5,6</sup>

#### Immature Platelet Fraction (IPF):

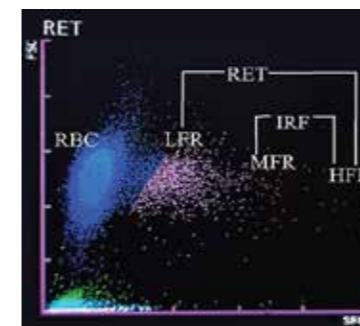
- Assesses bone marrow activity and platelet disorders
- Aids in early detection of thrombocytopenia and thrombocytosis
- Monitors platelet recovery and function

#### Optical Platelet Measurement (PLT-O):

- Enhances detection of platelet abnormalities
- Supports therapy decisions with high sensitivity
- Provides accurate, reliable platelet counts, especially in thrombocytopenia



### Comprehensive Reticulocyte Testing<sup>7,8</sup>



- **RET% & RET#:** Monitor response to anemia, bone marrow failure and hemolytic disorders
- **Reticulocyte Hemoglobin (RET-He):** Gain insights into RBC health and iron metabolism
- **Immature Reticulocyte Fraction (IRF):** Early, sensitive marker of bone marrow activity and erythropoiesis
- **Low, medium and high fluorescence ratio (LFR, MFR, HFR):** Assess reticulocyte maturation stages for faster detection and real-time monitoring of disease progression or therapy response

## Ordering Information

Product Code	Description	Pack size (ml)	Product Code	Description	Pack size (ml)
122325	H 7100 Dil	20000	195102	H 7 CON L	1 x 3 ml
122326	H 7100 Dil ret	1000	195103	H 7 CON N	1 x 3 ml
122327	H 7100 Lyse 1	500	195104	H 7 CON H	1 x 3 ml
122329	H 7100 Lyse 2	1000	195099	H 7 ret CON L	1 x 3ml
122334	H7100 Fluro ret	24 ml	195100	H 7 ret CON N	1 x 3 ml
122336	H7100 Fluro Diff	42 ml	195101	H 7 ret CON H	1 x 3 ml
122398	H Clean for H7100	10 X 4 ml	195098	Elite H CAL	1 x 3 ml

## References

1. Misiewicz A, Dymicka-Piekarska V. Fashionable, but What is Their Real Clinical Usefulness? NLR, LMR, and PLR as a Promising Indicator in Colorectal Cancer Prognosis: A Systematic Review. *J Inflamm Res.* 2023;16:69-81. Published 2023 Jan 7.
2. Khalil, Hasan & Hussein, Firas & Samra, Suzan. (2022). Comparison of ALC, LMR and IPS in predicting Prognosis in Hodgkin lymphoma. 10.21203/rs.3.rs-1982570/v1.
3. Senthilnayagam B, Kumar T, Sukumaran J, M J, Rao K R. Automated measurement of immature granulocytes: performance characteristics and utility in routine clinical practice. *Patholog Res Int.* 2012;2012:483670.
4. Hussain M, Liu G. Eosinophilic Asthma: Pathophysiology and Therapeutic Horizons. *Cells.* 2024;13(5):384. Published 2024 Feb 23.
5. Van De Wyngaert Z, Fournier E, Bera E, et al. Immature platelet fraction (IPF): A reliable tool to predict peripheral thrombocytopenia. *Curr Res Transl Med.* 2020;68(1):37-42.
6. Brittin GM, Dew SA, Fewell EK. Automated optical counting of blood platelets. *Blood.* 1971;38(4):422-430.
7. Aedh AI, Khalil MSM, Abd-Elkader AS, et al. Reticulocyte Hemoglobin as a Screening Test for Iron Deficiency Anemia: A New Cut-Off. *Hematol Rep.* 2023;15(1):201-211. Published 2023 Mar 14.
8. Chang CC, Kass L. Clinical significance of immature reticulocyte fraction determined by automated reticulocyte counting. *Am J Clin Pathol.* 1997;108(1):69-73.

### Erba Lachema s.r.o.

Karásek 2219/1d, 621 00 Brno, Czech Republic

Phone: +420 517 077 111

✉ sales@erbamannheim.com

[www.erbamannheim.com](http://www.erbamannheim.com)

### Transasia Bio-Medicals Ltd.

**An ISO 13485:2016 / 9001:2015 Certified Company**

Transasia House, 8, Chandivali Studio Road,

Chandivali, Andheri (E), Mumbai - 400 072

T: (022) 4030 9000 F: (022) 2857 3030

✉ responses@transasia.co.in

